

BARBARA SMITS ARTWORKS

Image Portfolio
August, 2010

Twenty Original Artworks

Barbara Smits
Barbara Smits Artworks
525 North Adams Street
De Pere, WI 54115-3503
(920) 336-9667
barbarasmits@att.net

Barbara Smits giclée prints are printed on Epson Watercolor or Premium Luster archival paper, using Epson archival inks, and have a life expectancy of at least 100 years if properly handled. Other fine art papers may be added in the future.

In order to control quality, I print my own prints on an Epson R1800 professional ink jet printer, and my largest available size is 13 x 19, which I think is a very good size - 13 x 19 frames up nicely to an 18 x 24 standard frame. I can print up to 13 x 44 inches long on roll paper and am working on some mural type images that are this size.

Smaller sizes are available: 5 x 7, 8 x 10, 8 x 12, 11 x 14, 11 x 17, priced accordingly.

Larger sizes are available for some artwork, such as 16 x 20, 20 x 30, or 24 x 36, depending upon the original. I have these prints made at our local professional digital printer and these will be more expensive. They are the same giclée prints made on an Epson 7880 printer using the same Epson or Fugii (made by Epson) paper and Epson ink.

I also can produce larger sized prints by combining several artworks into a collage. For example, four 13 x 19 Window On The Prairie I, II, III and IV prints could be combined into one large 24 x 36. I am also interested in creating fabric wall hangings from my artwork.

My prints can be ordered as full size prints (with a roughly 1/2 inch white border) or they can come self-matted, with a one inch border all around, then a thin gold inner border, and include a title, location and copyright information as part of the print.

One inch
paper
border
with
small title
in right
corner.



"Window On The Prairie - I" - by Barbara Smits, © 2010

“WINDOW ON THE PRAIRIE I” - PHOTO COLLAGE

Number One in a series of four prairie themed pictures that may be hung together as a grouping or framed together in the same frame. These pictures are meant to draw the viewer in, as if looking at the prairie through their own private window.

13 x 19 giclée print on archival Epson Watercolor paper. \$30

One inch
paper
border
with
small title
in right
corner.



"Window On The Prairie - II" - by Barbara Smits, © 2010

“WINDOW ON THE PRAIRIE II” - PHOTO COLLAGE

Number Two in a series of four prairie themed pictures that may be hung together as a grouping or framed together in the same frame. These pictures are meant to draw the viewer in, as if looking at the prairie through their own private window.

13 x 19 giclée print on archival Epson Watercolor paper. \$30

One inch
paper
border
with
small title
in right
corner.



"Window On The Prairie - III" - by Barbara Smits, © 2010

“WINDOW ON THE PRAIRIE III” - PHOTO COLLAGE

Number Three in a series of four prairie themed pictures that may be hung together as a grouping or framed together in the same frame. These pictures are meant to draw the viewer in, as if looking at the prairie through their own private window.

13 x 19 giclée print on archival Epson Watercolor paper. \$30

Printed full frame or self-matted with a one-inch paper and thin gold printed border, title and copyright info...you choose. People like to know something about the artwork they buy, so I like to include descriptive titles.



“We Rode Through Prairie Wildflowers Reaching Up To The Belly Of A Horse” By Barbara Smits, © 2010

PRAIRIE WILDFLOWERS - DIGITAL IMPRESSIONIST PHOTO

“We Walked Through Prairie Wildflowers Reaching Up To The Belly Of A Horse”
Number Four in a series of four prairie themed pictures that may be hung together as a grouping or framed together in the same frame. This piece of art is a work in progress and may come in different impressionistic styles as I continue to develop it!

13 x 19 giclée print on archival Epson Premium Luster paper. \$30



∞ "Flowers By The Window" ∞ by Barbara Smits, 2010

"FLOWERS BY THE WINDOW" IMPRESSIONIST PHOTO

Autumn flowers strain to catch the fading
sun through a parlor window.

13 x 19 giclée print on archival Epson
Watercolor paper. \$30



Printed full frame or
self-matted with a one-
inch paper and thin
gold printed border,
title and copyright
info...you choose.
People like to know
something about the
artwork they buy, so I
like to include
descriptive titles.

“WAITING FOR THE RAIN TO PASS” DIGITAL PHOTO

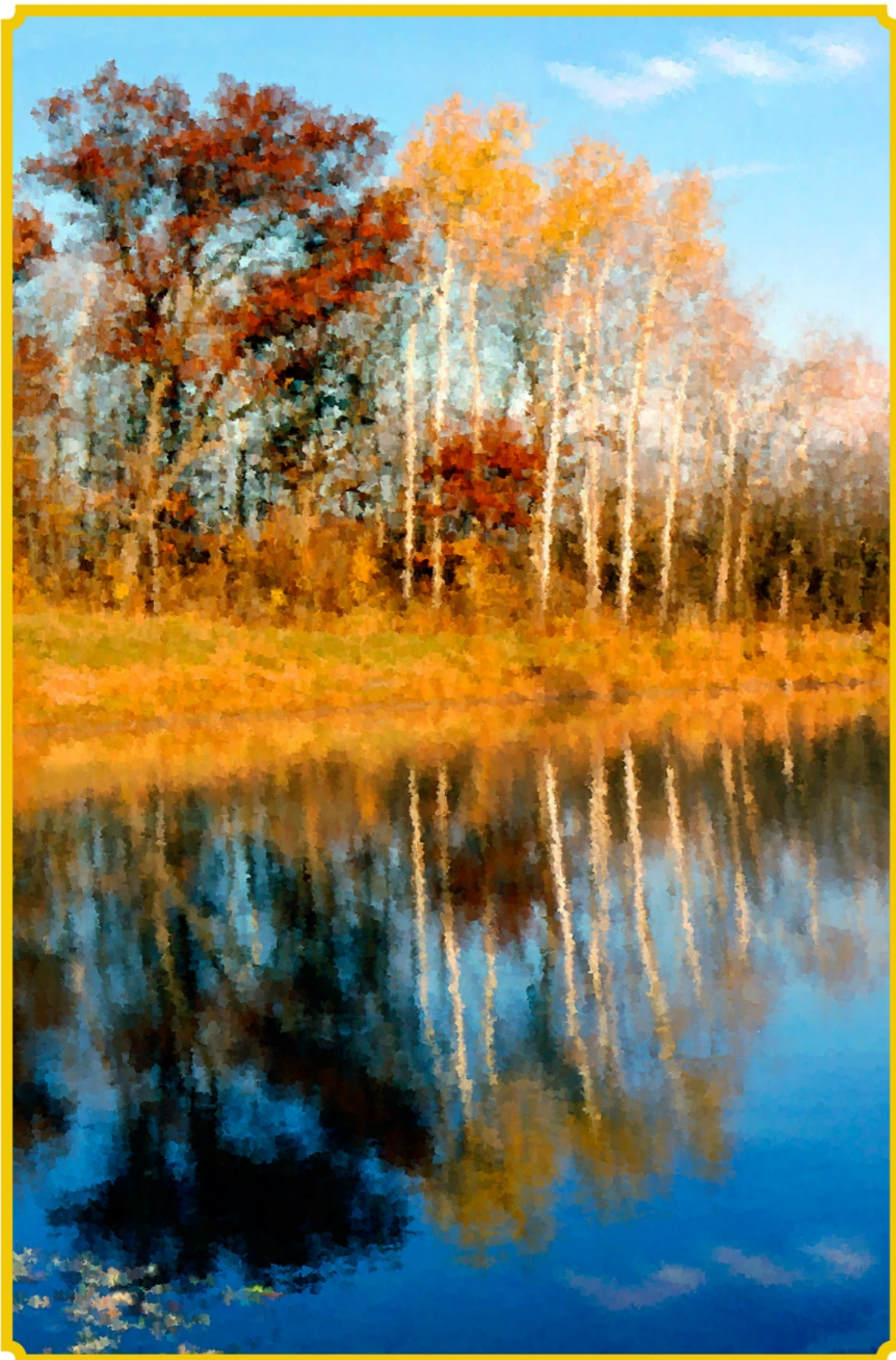
Cows huddled together under a tree in a Wisconsin farm field, waiting for the rain to pass. A digitally enhanced photograph with just a touch of watercolor and a stormy sky added to bring it to life!

13 x 19 giclée print on archival Epson Premium Luster paper. \$30

Printed full frame or self-matted with a one-inch paper and thin gold printed border, title and copyright info...you choose. People like to know something about the artwork they buy, so I like to include descriptive titles.



“Waiting For The Rain to Pass - Wisconsin Farm Field” by Barbara Smits, 2010



☞ "Fall Reflections On a Quiet Pond" ☞ by Barbara Smits, © 2010

“FALL REFLECTIONS ON A QUIET POND” - DIGITAL PHOTO

Reflections of fall foliage on a quiet country pond. A digitally enhanced photograph with an impressionist, spatter touch. This piece of art is a work in progress and may come in different styles as I continue to develop it!

13 x 19 giclée print on archival Epson Premium Luster paper. \$30

Printed full frame or self-matted with a one-inch paper and thin gold printed border, title and copyright info...you choose. People like to know something about the artwork they buy, so I like to include descriptive titles.

“SUNRISE, BLACK HAWK PRESERVE, ON THE MISSISSIPPI, WI” DIGITAL PHOTO

A quiet sunrise at moody Black Hawk Preserve, on the Mississippi River, WI. Black Hawk and other Native Americans frequented these areas and fought battles nearby during the Black Hawk War of 1832.

13 x 19 giclée print on archival Epson Watercolor paper. \$30

Printed full frame or self-matted with a one-inch paper and thin gold printed border, title and copyright info...you choose. People like to know something about the artwork they buy, so I like to include descriptive titles.



☞ “Sunrise, Black Hawk Preserve, on the Mississippi, WI” ☞ by Barbara Smits, © 2010

Printed full frame or self-matted with a one-inch paper and thin gold printed border, title and copyright info...you choose.



☞ "The Family Farm Lost Many a Beloved Son to War" ☞ By Barbara Smits, © 2010

“THE FAMILY FARM LOST MANY A BELOVED SON TO WAR”

The truth of this photo recently struck me when I realized how many Wisconsin farm boys lost their lives to war, never returning to work or carry on the family farm. This is a serious photo, meant to make people think about the sacrifices of war.

13 x 19 giclée print on archival Epson Watercolor paper. \$30

Printed full frame or self-matted with a one-inch paper and thin gold printed border, title and copyright info...you choose.



“Turbulent Days at Horicon Marsh, WI” By Barbara Smits, © 2010

“TURBULENT DAYS AT HORICON MARSH, WI”

Geese fly high to escape hunters on the ground, as shown by the red truck parked in the field. Done in a Van Gogh style to show turbulence and the cold, stormy days of winter soon to come!

13 x 19 giclée print on archival Epson Premium Luster paper. \$30

POETRY!

INCLUDE A POEM
WITH THE ARTWORK
TO COMPLETE THE
THEME!

Want to add a poem to
the artwork? Perhaps
in a separate frame, or
in a sectional mat
along with the picture?

Here are two poems I
have written that can
go along with the
Horicon artwork.

These are just a
sample! I can write on
any of my subjects!

CANADA GOOSE

Each fall they come as they did of old
From the lowlands of the Hudson Bay,
Canadian Geese across Wisconsin Skies
In those late October days.
From St. James Bay to Horicon
To the great conflux of the waters,
Where the Mississippi joins the Ohio
Down in southern Illinois.

Each year of my life I have watched their flight
And yearned to go their way;
Along the watery route of the Canadian Goose
To the muskegs of the Hudson Bay.
As they return to their place of birth,
In the month of the Cree Goose Moon,
I go home to the truth I've known
And their freedom in my soul.

I've heard their call as I've walked the fields
And stopped to watch them passing;
A sound in spring to cheer the soul,
Crees call them the "Hounds of Heaven."
I feel so old and yet so young,
Looking back across the years.
From Indian mounds to settled towns,
The old ways disappearing.

So many things have passed away,
Not to be recovered,
But the Canada Goose, half a million strong,
Still flies Wisconsin borders.
So here's to you, may you fly always,
Away from pain and sorrow.
May our children hear the beat of your wings,
Echoing through tomorrow.

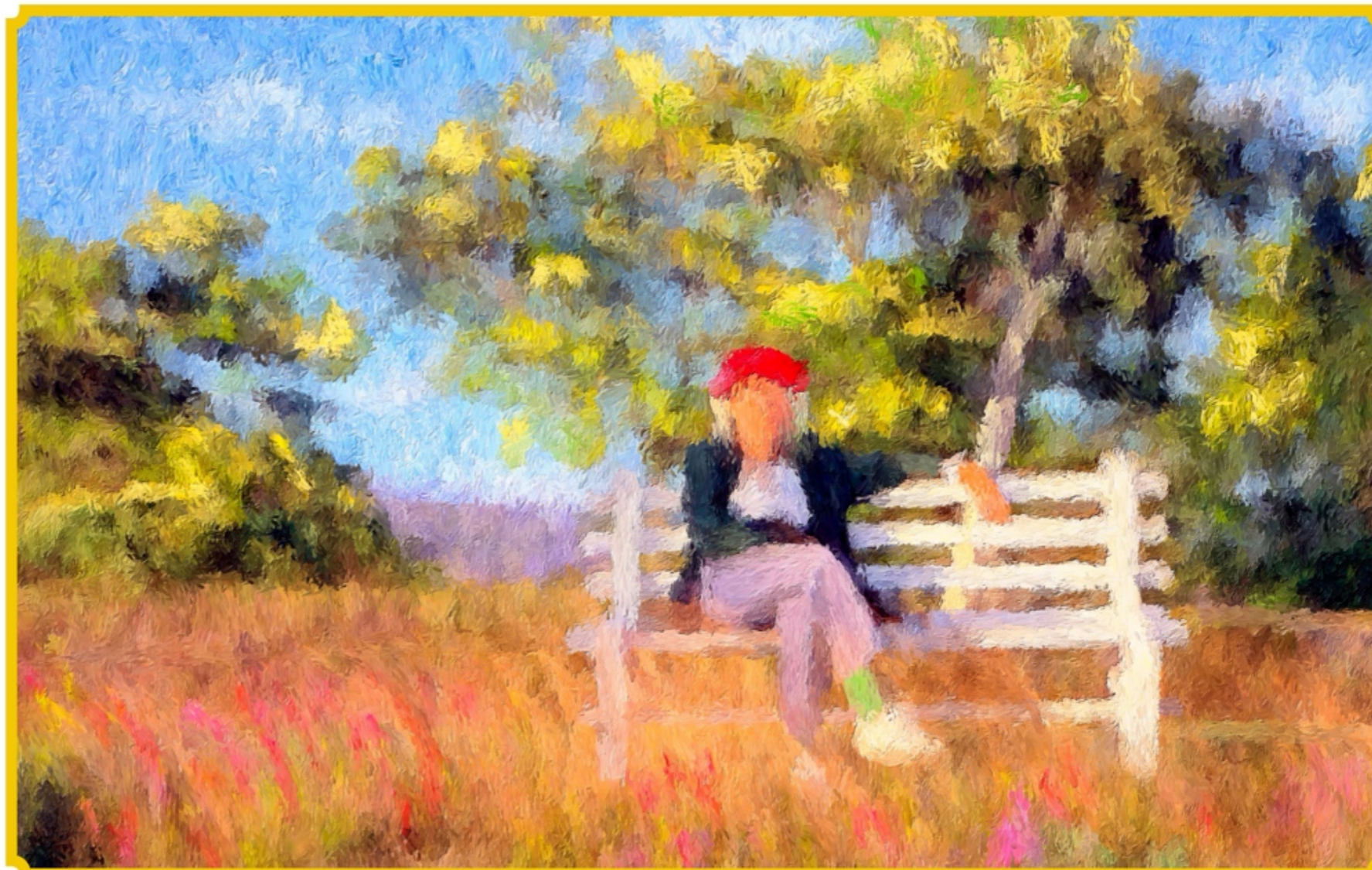
FLIGHT OF THE CANADA GOOSE

The sadness of fall approaches.
Chilly nights
And early sunsets--
Frost in the morning--
Warm, hazy afternoons--
Corn
Standing in the fields.

Flocks of geese pass overhead
On their way to warmer regions.
They leave, but we remain,
Bound to our homes and jobs,
Families and comforts.
Their honking flight
Brings loneliness to the heart
That must stay behind,
Secluded by another
Cruel Wisconsin winter.
We, superior in every way,
Long for the errant freedom
Of the flock.

The V-shaped flight
Of the Canada Goose
Removes all doubt
That summertime has passed
Into another season,
Reminding us
That we must soon prepare
For winter's bright
And snowy days.

Printed full frame or self-matted with a one-inch paper and thin gold printed border, title and copyright info...you choose.



“Lady In The Red Hat” By Barbara Smits, © 2010

“LADY IN THE RED HAT” - DIGITAL IMPRESSIONIST PHOTO

Everyone who has seen this picture has liked it. It has passed a juried selection for the 66th Art Annual Juried Exhibition at the Neville Public Museum in Green Bay, WI. A whimsical look at a classy lady sitting on a bench as the sun goes down.

13 x 19 giclée print on archival Epson Watercolor paper. \$30



“Mantle On the Great Stone Fireplace” By Barbara Smits, © 2005

“MANTLE ON THE GREAT STONE FIREPLACE” - PHOTO

This sepia toned black and white photo depicts what might have decorated a fur trader's fireplace mantle in the late 1700's. Full frame or with gold border.

13 x 19 giclée print on archival Epson Premium Luster paper. \$30

“ONE WITH THE WATER” - DIGITAL PHOTO

A real fur trader’s canoe as seen at the
Grand Portage Fur Trade Museum.
Printed with a vignette.

13 x 19 giclée print on archival Epson
Premium Luster paper. \$30

Printed full frame or self-matted with a
one-inch paper and thin gold printed
border, title and copyright info...you
choose. People like to know something
about the artwork they buy, so I like to
include descriptive titles.



“One With the Water” by Barbara Smits, © 2005

Printed full
frame or self-
matted with a
one-inch paper
and thin gold
printed border,
title and
copyright
info...you
choose.



“Marquette’s Vision, 1673” - Fox River, De Pere, Wisconsin by Barbara Smits, © 2005

“MARQUETTE’S VISION” - PHOTO

This sepia toned black and white photo depicts a current scene of the Fox River at De Pere, WI, where the Jesuit, Fr. Jacques Marquette, and Louis Jolliet set out from the mission at the “Rapides des peres” (Rapids of the Fathers) in 1673 on their journey to explore the Mississippi River.

13 x 19 giclée print on archival Epson Premium Luster paper. \$30

Printed full frame or self-matted with a one-inch paper and thin gold printed border, title and copyright info...you choose.



“Cows Near Log Barn” - Wisconsin By Barbara Smits, © 2006

“COWS NEAR LOG BARN” - DIGITAL PHOTO ENHANCED

Digital watercolor turns this rural scene into a portrait with cows posing as if in a trance. Color, texture and composition make this photo unique.

13 x 19 giclée print on archival Epson Premium Luster paper. \$30

Printed full
frame or self-
matted with a
one-inch paper
and thin gold
printed border,
title and
copyright
info...you
choose.



☞ "Rawley Point Light, Lake Michigan" - Point Beach State Forest, WI ☞ by Barbara Smits, © 2006

“RAWLEY POINT LIGHT” - PHOTO

Rawley Point Light is a work in progress. I like this version, but will probably do several more in different mediums, perhaps with several different lighthouse scenes included in one large format picture. See the following slide for another viewpoint.

13 x 19 giclée print on archival Epson Premium Luster paper. \$30

“LIGHT KEEPER’S COTTAGE”
RAWLEY POINT LIGHT”
DIGITAL PHOTO ENHANCED

Another view of the Rawley Point Light Station showing only the entrance, beautifully lit by the afternoon sun going down. This version is done in impressionist digital watercolor to bring out the romance of the scene.

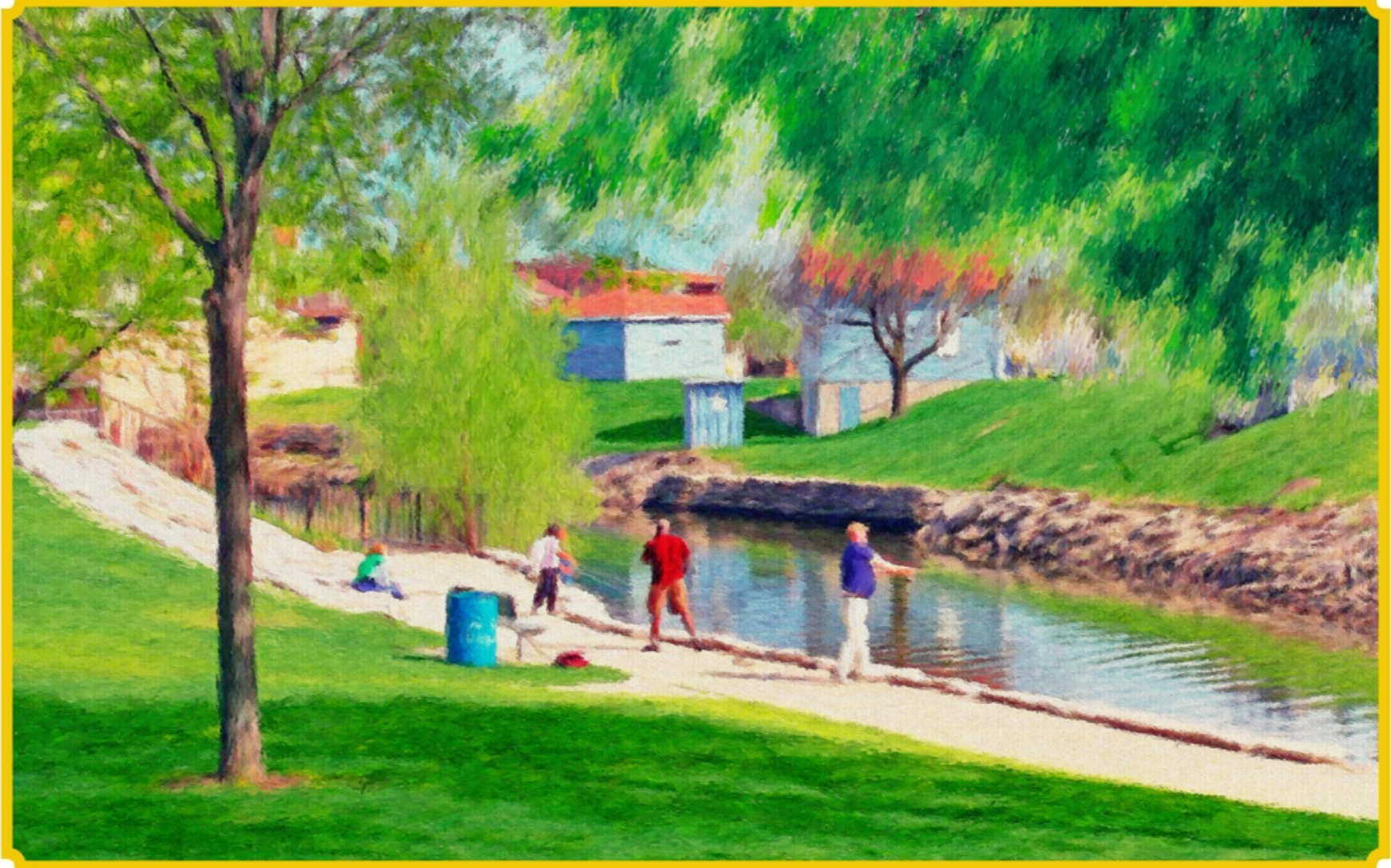
13 x 19 giclée print on archival Epson Watercolor paper. \$30

Printed full frame or self-matted with a one-inch paper and thin gold printed border, title and copyright info...you choose. People like to know something about the artwork they buy, so I like to include descriptive titles.



“Light Keeper’s Cottage, Rawley Point Light, WI” by Barbara Smits, © 2010

Printed full
frame or self-
matted with a
one-inch paper
and thin gold
printed border,
title and
copyright
info...you
choose.



“Fishing at the Locks” De Pere, WI By Barbara Smits, © 2010

“FISHING AT THE LOCKS” - IMPRESSIONIST PHOTO

“Fishing at the Locks” depicts a spring scene of people happy to be out and fishing in the warm sun at the locks of the Fox River at De Pere, WI. This work has a warm impressionist look.

13 x 19 giclée print on archival Epson Watercolor paper. \$30



“Sunlit Kitchen” by Barbara Smits, © 2006

“SUNLIT KITCHEN” DIGITAL PHOTO

Woman baking pies in a sunlit kitchen.
This print brings back memories and I
know people like it because I have sold it.

13 x 19 giclée print on archival Epson
Premium Luster paper. \$30

Printed full frame or self-matted with a
one-inch paper and thin gold printed
border, title and copyright info...you
choose. People like to know something
about the artwork they buy, so I like to
include descriptive titles.

Printed full frame or self-matted with a one-inch paper and thin gold printed border, title and copyright info...you choose.



“Simple Pleasures On The Ice” - Fox River, De Pere, WI By Barbara Smits, © 2005

“SIMPLE PLEASURES ON THE ICE” - ENHANCED PHOTO

“Simple Pleasures On The Ice” depicts an ice fishing scene on Fox River, De Pere, WI, but could be anywhere. People like this picture and I have sold it.

13 x 19 giclée print on archival Epson Watercolor paper. \$30